

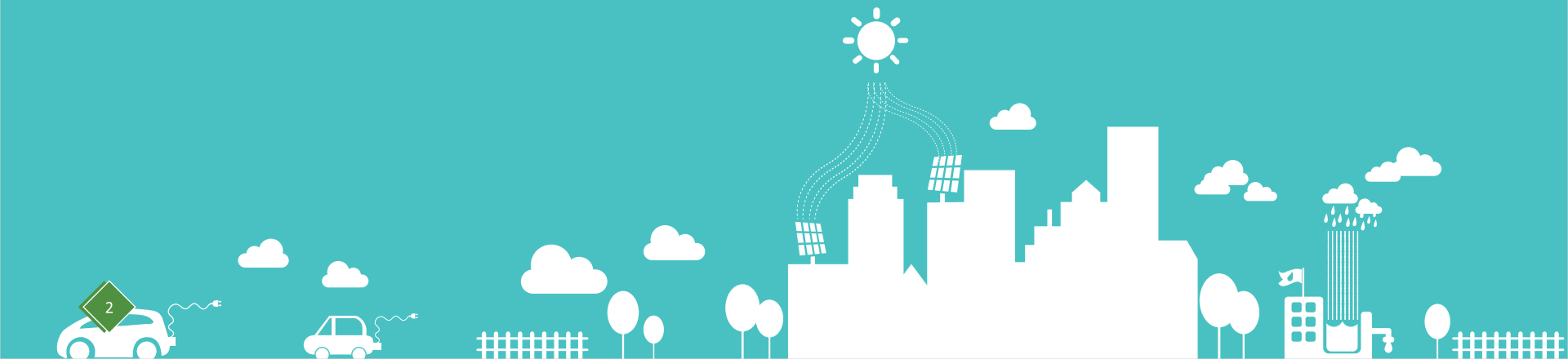
A Smart Investment Destination Beckons
Integrated Industrial Township Greater Noida

DMIC NODE IN GREATER NOIDA



SMART CITY – DMIC IITGNL

EFFICIENT, LIVABLE AND
SUSTAINABLE



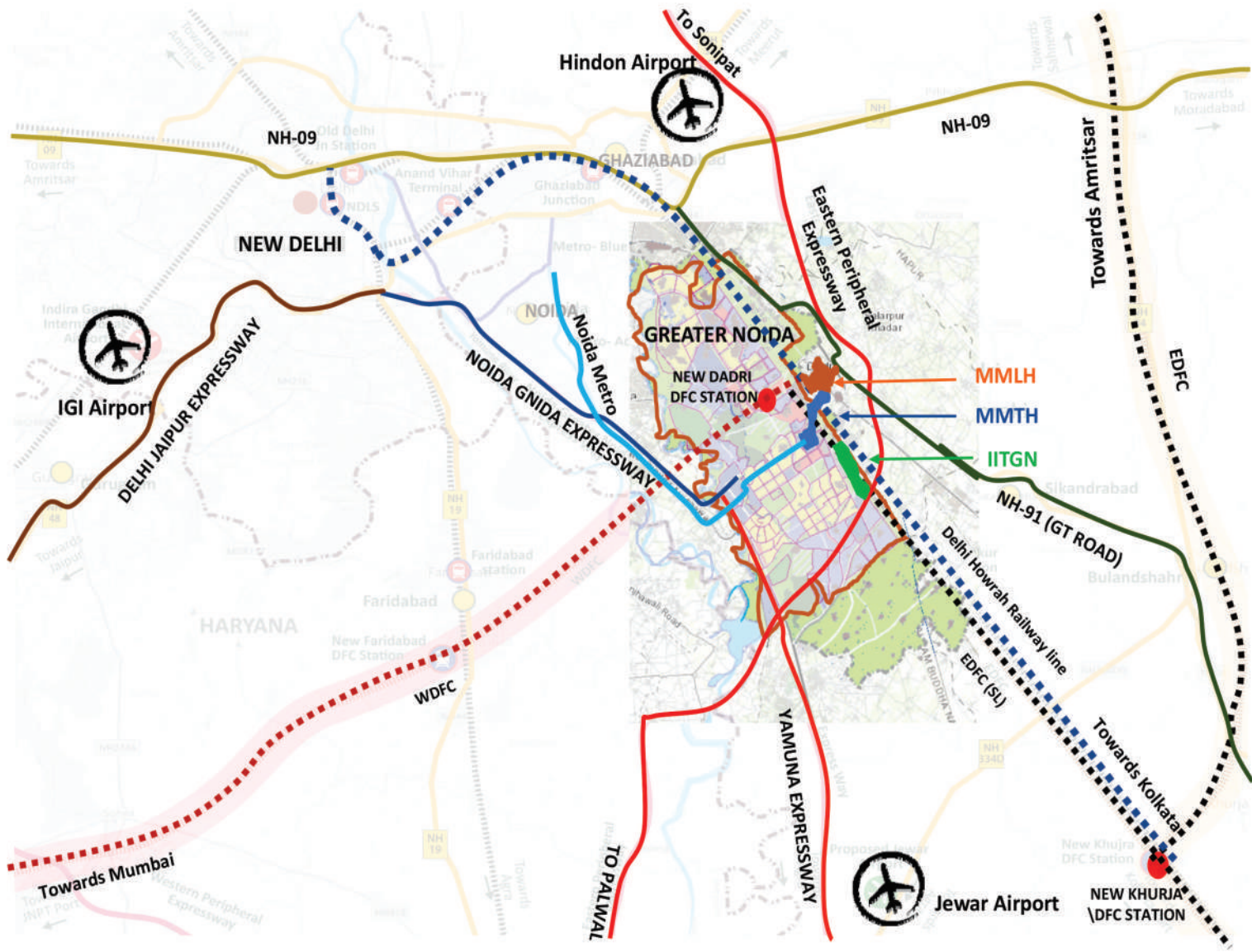
DMIC Integrated Industrial Township Greater Noida Limited is a 50:50 joint venture SPV between National Industrial Corridor Development & Implementation Trust of Government of India and Greater Noida Industrial Development Authority of the Government of Uttar Pradesh for development, operation and maintenance of following three projects under Delhi Mumbai Industrial Corridor in Greater Noida:

- Integrated Industrial Township
- Multi Modal Transport Hub
- Multi Modal Logistics Hub

Integrated Industrial Township, Greater Noida (IITGN) is a world class smart industrial township comprises of total area of 302.06 Hectare (747.5 Acres) having industrial, commercial and residential land use. The township has state-of-the-art plug & play infrastructure and world class technologies for modern urbanization and fostering industries.

SEAMLESS CONNECTIVITY

REGIONAL CONNECTIVITY



IITGN is well connected to all major cities of countries through national and state highways, expressways, railways, domestic and international airport. It is situated in close proximity to New Delhi, Noida, Gurgaon, Faridabad, Ghaziabad cities and NH-91, Noida Greater Noida Expressway, Delhi Meerut Expressway, Eastern Peripheral Expressway and Yamuna Expressway, Delhi-Howrah rail line, IGI Airport, Hindon Airport etc. are easily accessible from the township. Further, being situated at the junction of the eastern and western dedicated freight corridors and development of another upcoming international airport at Jewar, Multi Modal Logistics Hub & Multi Modal Transport Hub at Boraki, makes it one of the most connected places in the country.



25 mins from the National Capital Delhi



Proposed Multi Modal Transport Hub (MMTH) at Boraki, Greater Noida (approx. 4km)



Metro Connectivity to Delhi, Noida & Gurugram



Proposed Multi Modal Logistics Hub (MMLH) at Greater Noida adjacent to MMTH (approx. 6km)



Noida-Greater Noida Expressway, Yamuna Expressway, Eastern Peripheral Expressway & NH-91 – 10 min away



Delhi Howrah Railway Line – Adjacent Dadri Railway Junction – 10 Km



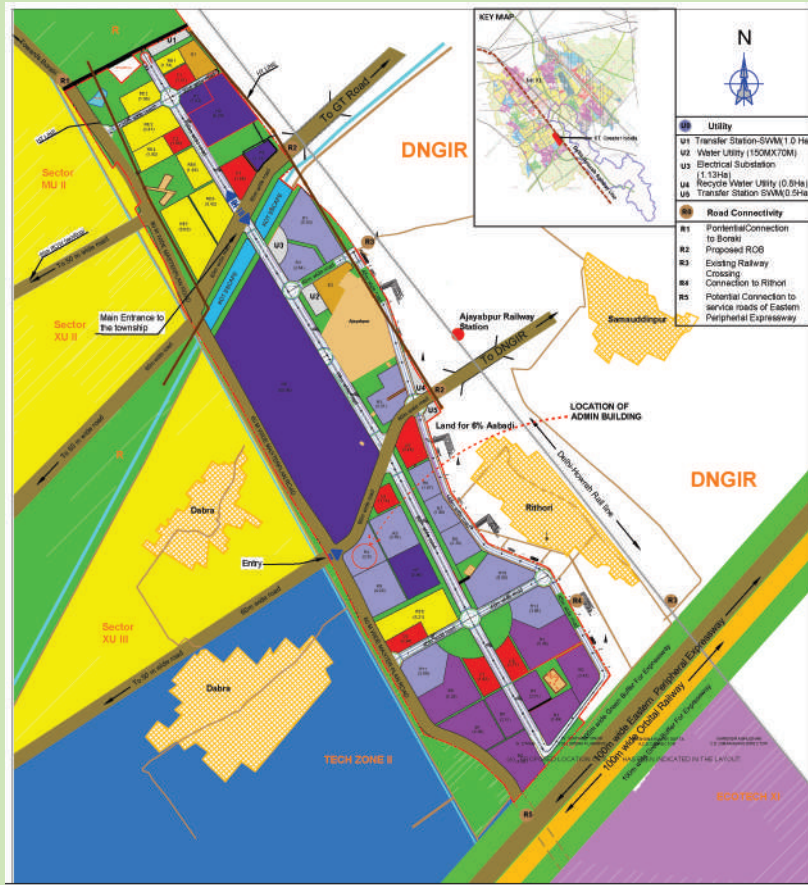
**IGI Airport New Delhi – 60 Km
Noida International Airport, Jewar – 40 Km**



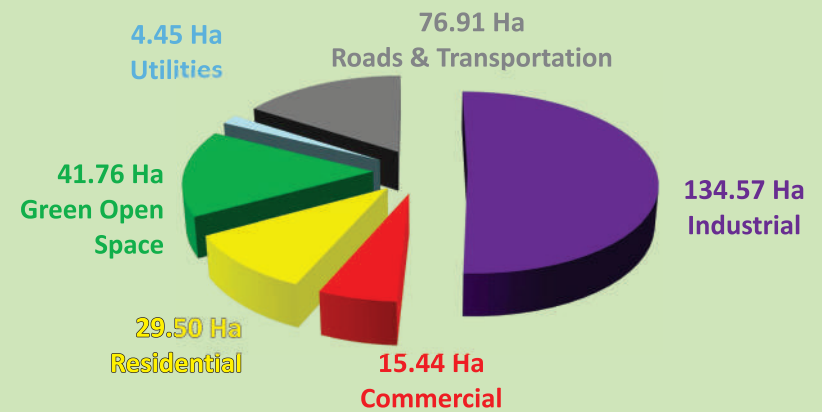
Upcoming New Dadri Station of WDFC – 10 Km

SMART PLANNING

Layout plan of township



Land use pattern



Meticulous planning of IITGN makes it a township that is poised to become a destination preferred alike by entrepreneurs, industrialists and residents.



SMART INDUSTRIES



The Industry Mix at Integrated Industrial Township Greater Noida is planned to promote sustainable manufacturing and futuristic technologies to cater the needs of both present as well as future.



Hi-Tech/IT (23.8%)

Bio-Technology

ITES/ITIS

Nano
Technology

Opto
Electronics



Green Non-Polluting Industries (Including Bio-Tech and R&D) 27.17%

Bio-Pharma

Bio-Services

Bio-Agri

Bio-Industrial

Bio-Informatics

IT, Electronics

Automobile

Food

Pharma

Healthcare

SMART BY DESIGN



Dedicated 220 KV Power Sub-station supplied by two transmission lines.



Water Reservoir for 24 x 7 water Supply



Automated Waste Collection Utility Building and Bio-Methanation Plant for waste to electricity production



Fully Automated 33/11 Electric Sub-Station



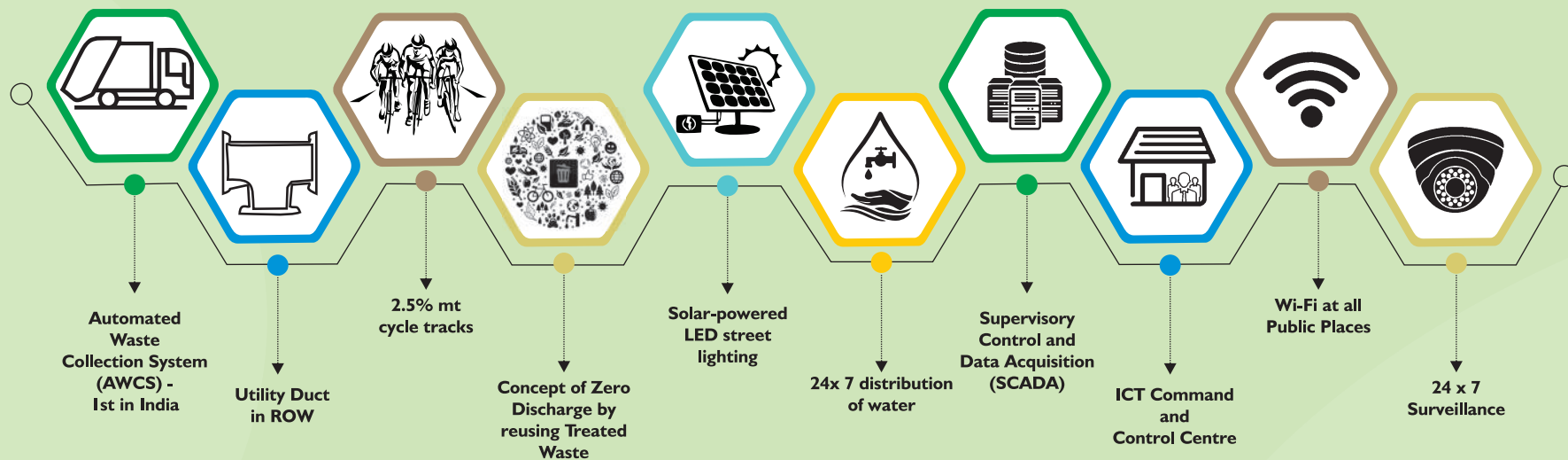
Dedicated RMU Building for each plot for electricity and Optical Fiber Connection



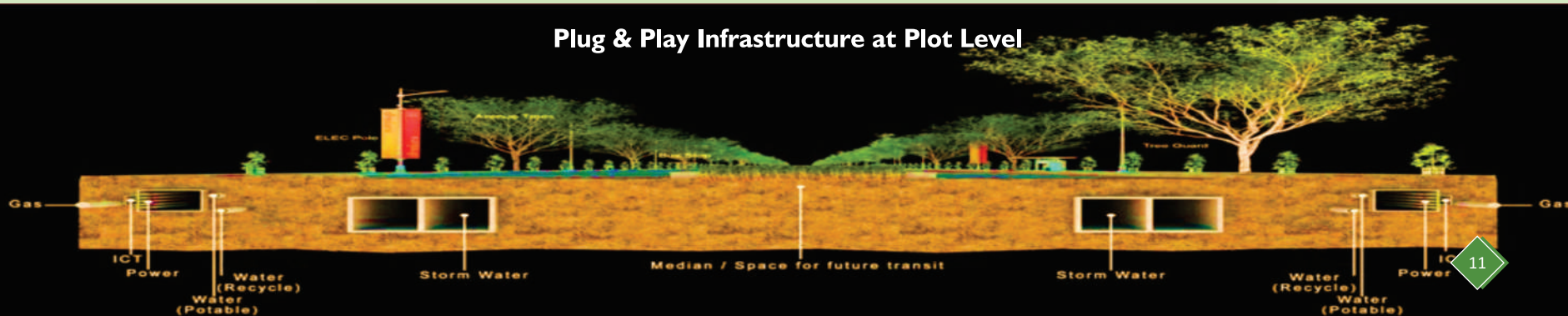
Wide roads with service lane, cycle track and pedestrian path and all utility ducts beneath

IITGN has state-of-the-art trunk infrastructure facilities including Automated Waste Collection System, wide roads with service lanes and cycle tracks and pedestrian track, all underground utility ducts, 24*7 water supply, zero water discharge, 24*7 uninterrupted high quality power supply through dedicated 220/33 Kv power sub-station and 33/11 Kv distribution network, High Speed Optical Fiber network and solar streetlights. All services are available to the end user at plot level making it complete plug & play infrastructure.

With features like Supervisory Control and Data Acquisition (SCADA) in utilities, 24*7 surveillance through CCTV cameras, Integrated ICT command and control center, wi-fi at all public places and E-governance, IITGN carves itself out as a unique and smart community.



Plug & Play Infrastructure at Plot Level



SMART NEIGHBORHOOD



Malls and Shopping Complex



Serene Green City



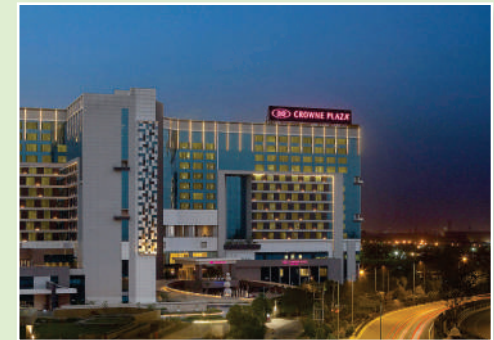
Sports Complex



18 Hole Golf Course



Metro Connectivity



World-class Hotels

Integrated Industrial Township Greater Noida, being situated in Greater Noida City, which is one of the India's most planned cities harness all physical, social, economic and geographical advantages of Greater Noida., including existing facilities of Greater Noida City e.g. excellent physical and social infrastructure, smooth and wide roads, most open green spaces, world class universities and colleges, international schools, ultramodern residential and commercial facilities, shopping malls, hospital, golf course, sports stadium, exhibition space, auditorium, hotels, restaurants, and other recreational facilities.



Well planned residential societies



Schools, Colleges and Universities

EASE OF DOING BUSINESS

Single Window Clearance System

Two way Interaction System for Entrepreneurs and varied Govt. Departments

Online application and land allotment through e-LMS

Online approval and clearances of all compliances for setting up the industry

Time bound decision on approval and clearances



SMART INVESTMENT OPPORTUNITIES

Investors are facilitated through a Single Window Clearance System. The e-Land Management System of IITGN makes the process of making application for land, allotment of land, application and issuance of various certificates and approvals and maintenance of investors records online and paperless. All approvals and clearances are given in time bound manner making it easier for the investors to focus on core business activities and running their businesses smoothly.

Open Ended Scheme for Allotment of Industrial plots has been floated on 24.09.2021.

ALLOTMENT RATES

Industrial Plots : Hi Tech / IT/Green Non-Polluting Industries (Including Bio-Tech and R&D)

**Rs. 19,000
per sq. mtr.**

Other Land uses

Commercial/Mixed Use		Residential-GH		Residential- EWS	
Plot Size (sq.mt)	Any Size	Plot Size (sq.mt)	Any Size	Plot Size (sq.mt)	Any Size
Rate (INR/Sq.mt)	74,000.00 (On Bid)	Rate (INR/Sq.mt)	43,000.00 (On Bid)	Rate (INR/Sq.mt)	24,000.00

Government of Uttar Pradesh in its efforts to promote investment in the state offers many incentives to industries through U.P. Investment & Employment Promotion Policy 2022 as well as more than 20 sector specific policies e.g.:



Key benefits under Umbrella Policy i.e. U.P. Investment & Employment Promotion Policy 2022:

Mutually exclusive options to cover wider category of projects under fiscal incentives program

- **Capital Subsidy** up to 42% of Eligible Capital Investment
- **Net SGST** reimbursement up to 300% of Eligible Capital Investment
- 30% top- up on incentives received under **PLI** up to 100% of Eligible Capital Investment
- Incentive for **R&D projects, Intellectual Property Rights & Centers of Excellence**
- Incentive for **Infrastructure projects - Pumped Storage Projects** & open for adding new areas
- **Case-to-case basis incentives** for Ultra Mega category projects of special importance

Categories	Capital Investment	Investment Period
Large	Above ₹50 Cr but below ₹200 Cr	Up to 4 years
Mega	₹200 Cr or above but below ₹500 Cr	Up to 5 years
Super Mega	₹500 Cr or above but below ₹3,000 Cr	Up to 7 years
Ultra-Mega	₹3,000 Cr or above	Up to 9 years

Note: Detailed Policies and other schemes can be viewed and downloaded from www.investup.gov.in

LAND ALLOTMENT PROCEDURE

Procedure for Submitting Application

Application can be submitted online for Industrial plots at www.niveshmitra.up.nic.in and for e-Auction of Residential and Commercial plots at <https://iitgnl-bankofbaroda.com>.

Eligibility of Applicant

Any individual/Partnership/LLP/Company Co-operative Institution/Body Incorporated outside India/Body Corporate

Allotment Procedure (Industrial)

- By Interview - If there is only one application for the land
- By Draw of lots - If the number of application received for a plot are more than one

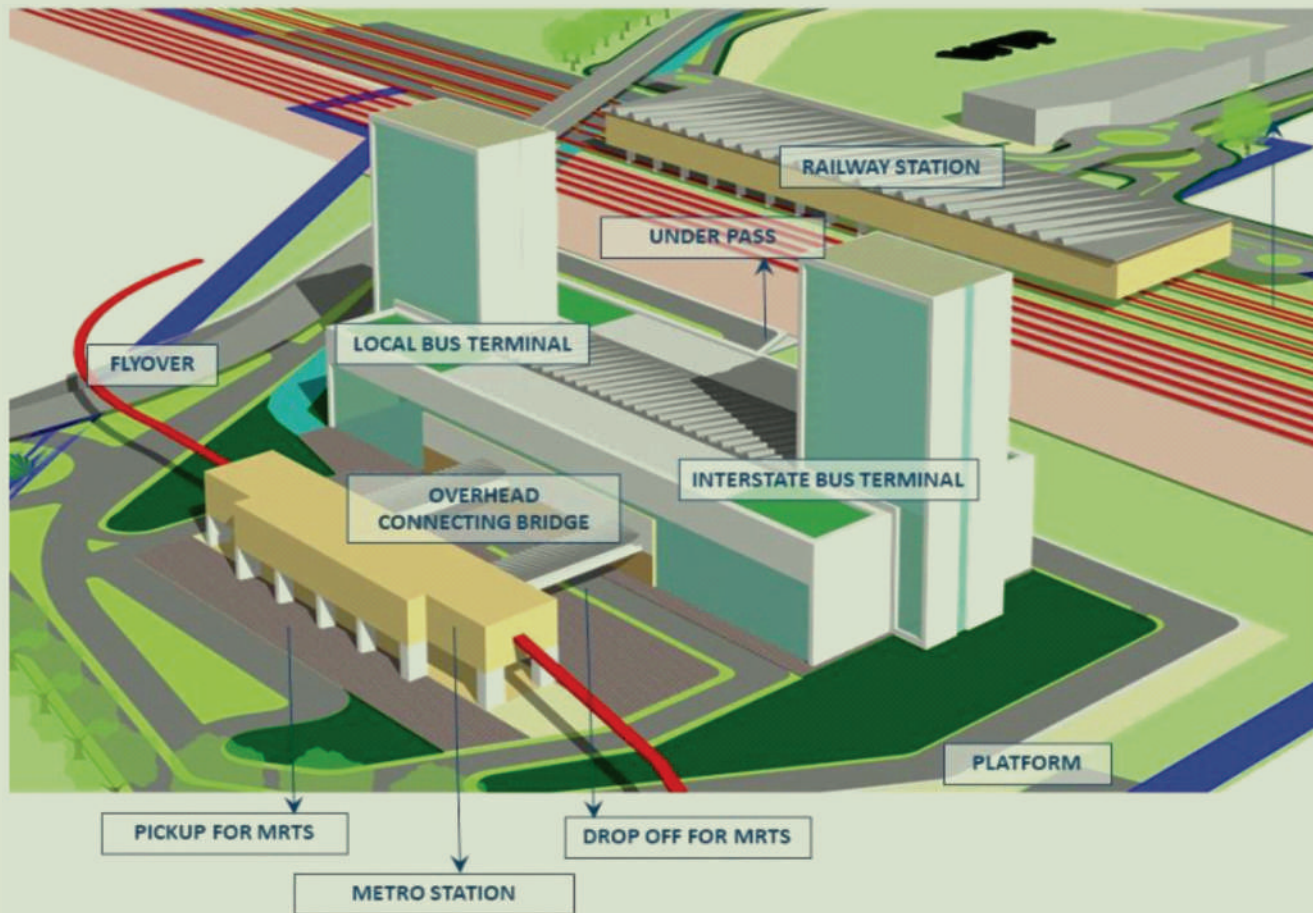
Payment Plan (Industrial)

1. Full and Final Payment within 90 days of allotment (5% Rebate)
2. Payment 40% of the total premium within 90 days and balance 50% within one year of allotment (2% rebate)
3. 20% Payment in 90 days of allotment. Balance 70% in eight (8) equal half- yearly instalments within four (4) years from allotment



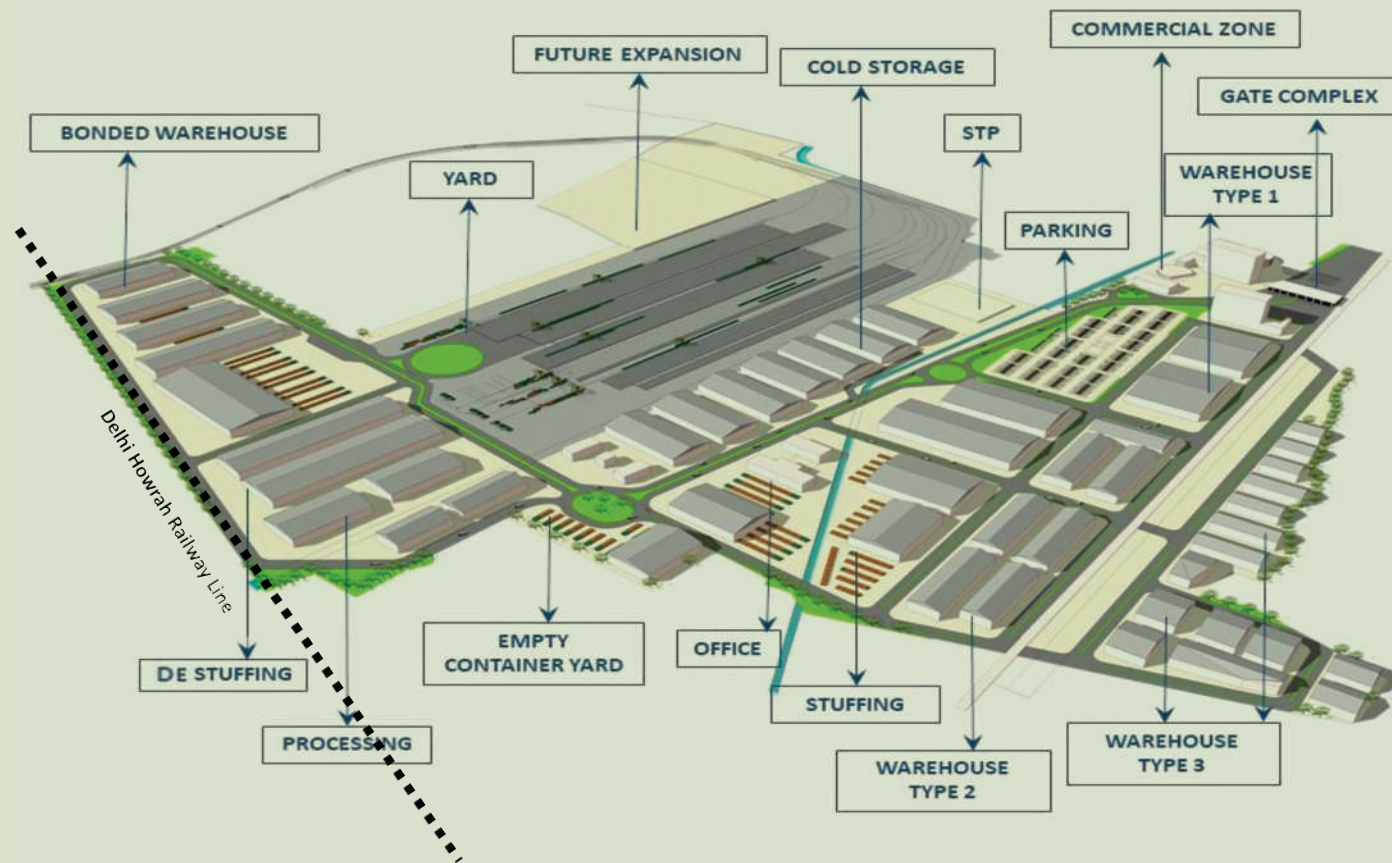
Scan the QR Code to download Scheme Brochure

MULTI MODAL TRANSPORT HUB



- Planned to be developed as a world class integrated passenger handling facility
- Approx. 145 Ha. of area across existing Delhi-Howrah rail line at Boraki, Greater Noida
- State-of-the-art railway terminal of Indian Railways, Inter State Bus Terminus and Local Bus Terminus and Metro Connectivity at single point
- To facilitate seamless movement of passengers to and from Greater Noida Region.
- Business Center - Large Scale commercial developments like office space, retails, hotels, shopping malls, Multi-Level Parking.

MULTI MODAL LOGISTICS HUB [FREIGHT VILLAGE]



- One of the largest logistics hubs in the country
- Situated at Intersection of Eastern and Western Dedicated Freight Corridors
- To be developed on approx. 334 Hectare of area at Dadri, Greater Noida
- To function as dry port for storage, aggregation, import and export of Industrial freight
- Fastest Transit of raw material and goods throughout the country and the world
- Container handling Facilities, warehousing, customs clearance, bonded warehousing, cold storage, processing, de-stuffing and stuffing, value-added packaging facilities at a single point

COME HELP US BUILD AN INCLUSIVE AND SMART COMMUNITY



www.dmicdc.com



www.greaternoidaauthority.in



DMIC Integrated Industrial Township Greater Noida Limited
CIN: U74900UP2014PLC063430

Registered office: 11th Floor, Tower-I, Plot No-I, Knowledge Park-IV,
Greater Noida, Gautam Budh Nagar, Uttar Pradesh, India 201308
Ph.: 0120-2336044 / 45 | E-mail: info@iitgnl.com | Website: www.iitgnl.com



<https://twitter.com/iitgnl>



https://www.youtube.com/DMIC_IITGNL